



**H A P P Y
W E D N E S
D A Y**

ISSUE #5: AUTHORITY

HI THERE,

WELCOME TO THE FIFTH ISSUE OF
HAPPY WEDNESDAY MAGAZINE.

IT'S ABOUT AUTHORITY.

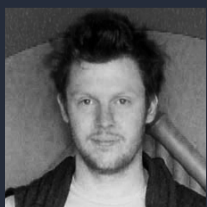
DESIGN AND LAYOUT BY
SERGIO F GALLARDO

COVER ILLUSTRATION BY
SUSANA BLASCO

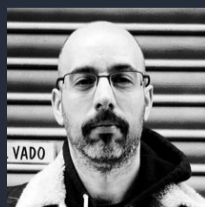
WEBSITE
www.happywednesday.co.uk

THE PARTY FOR ALL PROPAGANDA
CREATED BY RAUL QUIROS

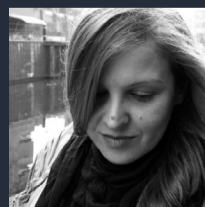
CONTRIBUTORS



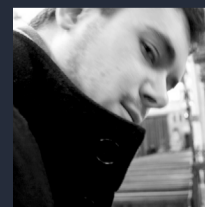
TOM LANCASTER
DESIGNER



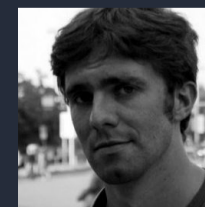
MIKEL JASO
DESIGNER



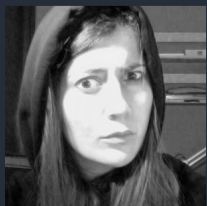
SUSANA BLASCO
DESIGNER



EDU FUENTES
ILLUSTRATOR



RAUL QUIROS
WRITER



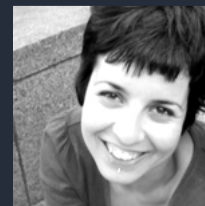
NATALIA MIRAPEIX
DESIGNER



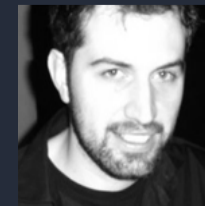
ALBER CARNERO
DESIGNER
& ILLUSTRATOR



ANA BENITEZ
DESIGNER



BARBARA
ANA GOMEZ
ILLUSTRATOR



SERGIO F
GALLARDO
DESIGNER

PFA

The party for all

Because you are the party.



John

Democracy is falling apart. You notice when you put the TV on - wars in dodgy countries, financial meltdown, Disney movies - how did we end up in this situation? We don't like our current democracy. We think it needs some improvements but, what? When? Who? And most important: How?

We still believe democracy has a chance.

We, in The Party for All, believe this system is a bombastic triumph against the forces of evil. Communism succumbed to democracy. Cruel dictatorships. Feminism. And some others will follow: hipsters, for instance. **We do support democracy but we don't like the current system:** and we don't like it because it is not reaching the audience - **you**. It does not matter if you are black, member of the elderly, or just normal - the problem is that you have too many choices. Shall I give my vote to the conservatives and face cuts, trade unions dismembering, gruesome liberalism? Or shall I give my vote to socialists, and expect a life endorsement to Karl Marx and the other beardy guys?

Don't think twice, it's alright. In The Party for All, we have a fully engineered political program that covers absolutely every single option you can think of. From abolition of homosexual marriage to strengthening of taxes to the rich. From Sharia to Salomonic law, we support and provide a real alternative to every other single political option, because we cover all of them. We support both death penalty and abolitionists. We torture our prisoners in front of a panel of humanitarian workers.

We do democracy, for all, at once.

**Not enough reasons to vote us?
Let us know. We're the first
party to open their programs
to the public. Because you do
not need to scratch your head
looking for alternatives.**



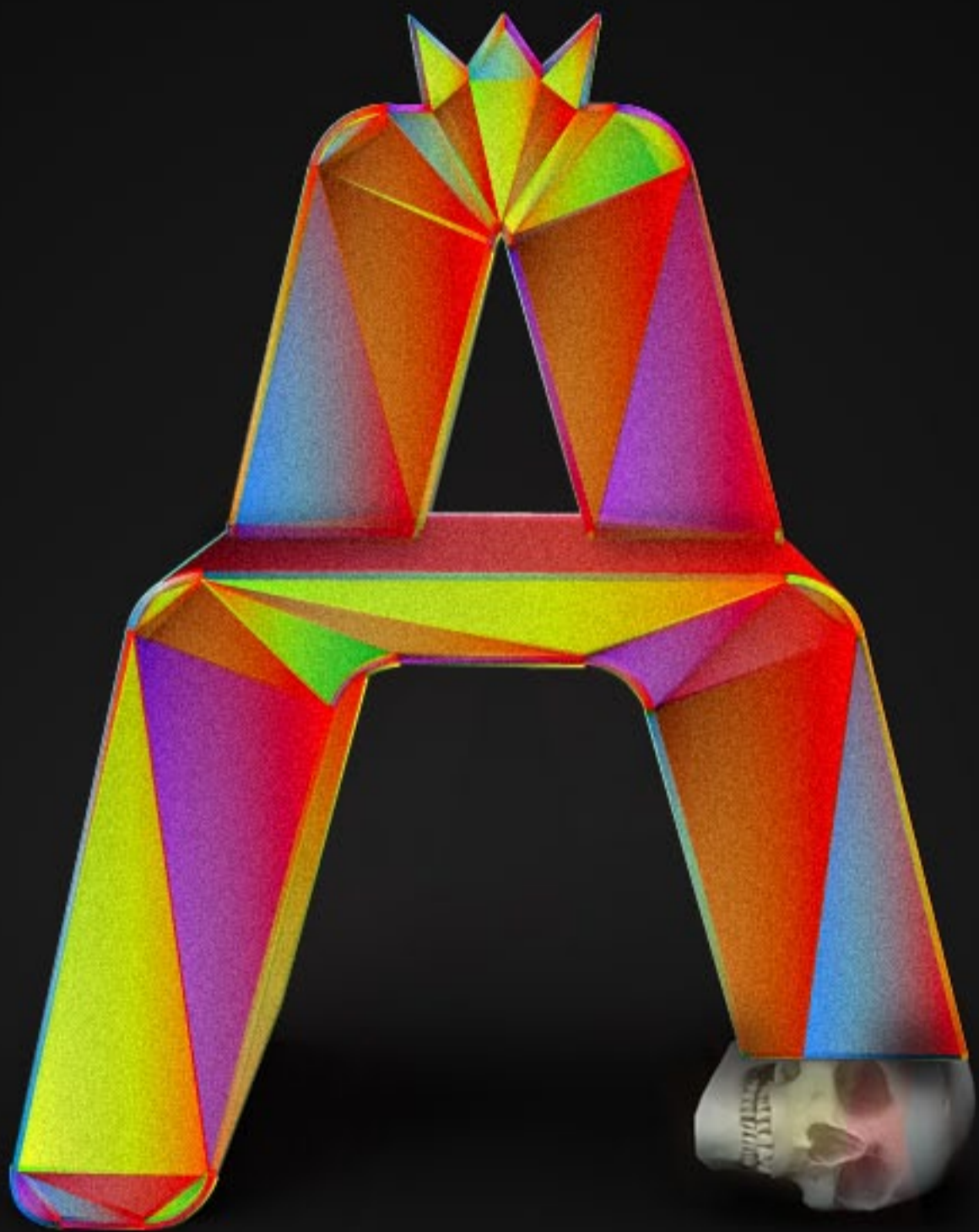
PFA

The Party for All.



TITLE: KING'S CHAIR

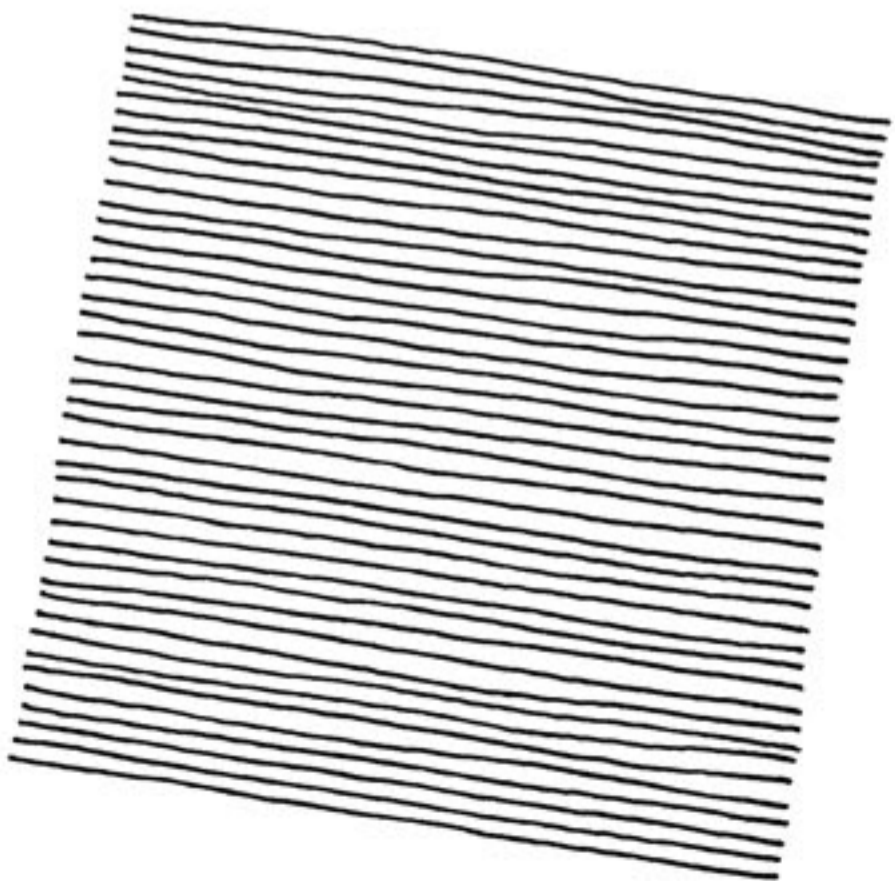
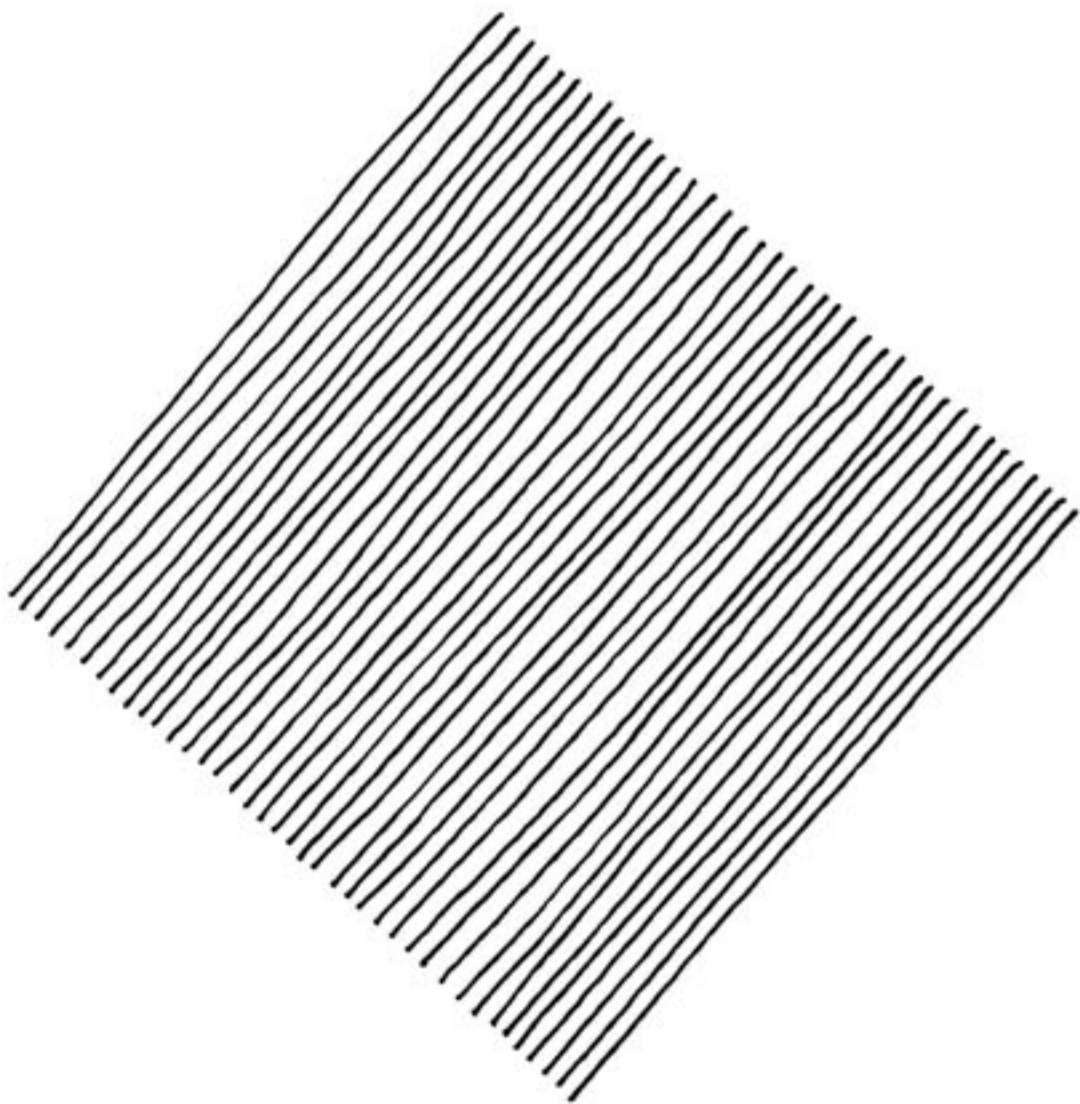
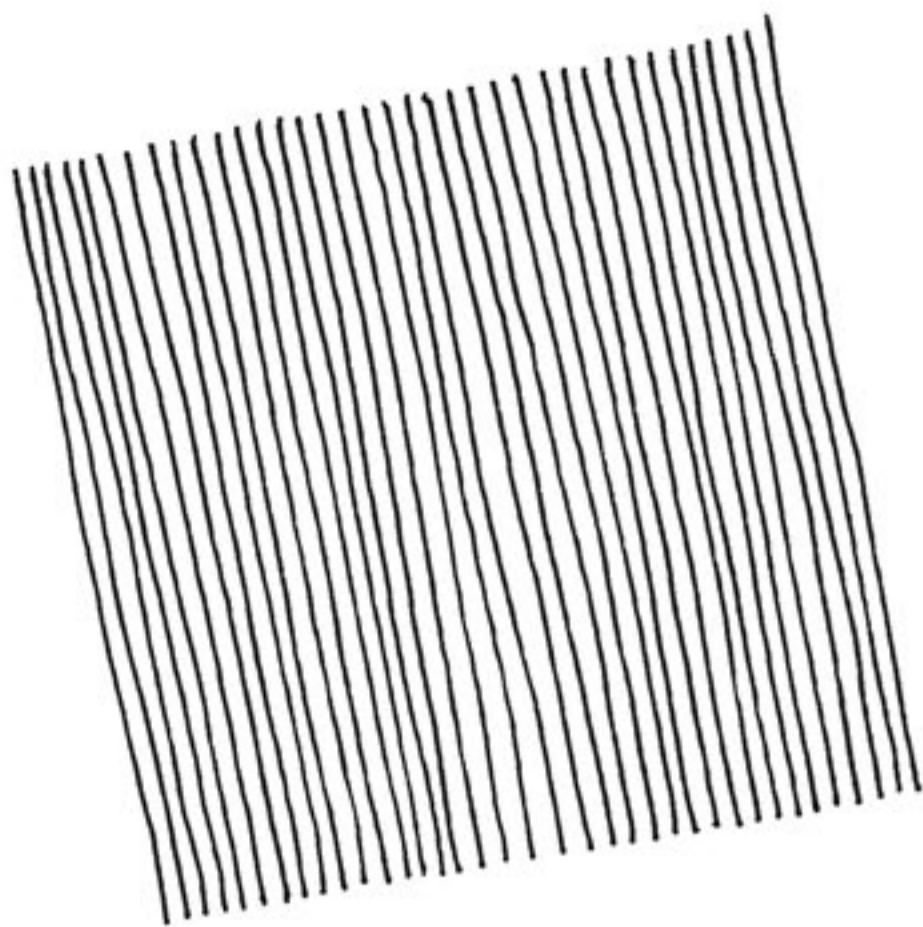
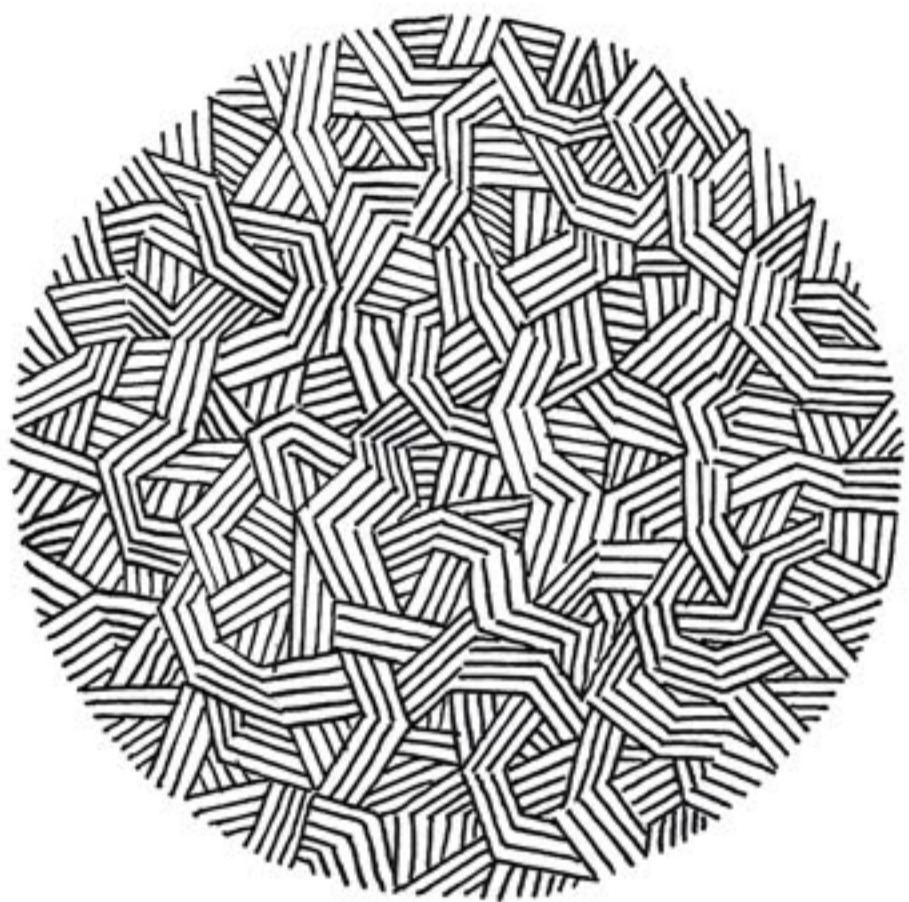
ILLUSTRATION: ALBER CARNERO





TITLE: AUTHORITY

ILLUSTRATION: SUSANA BLASCO





sit!











TITLE: THE AUTHORITY

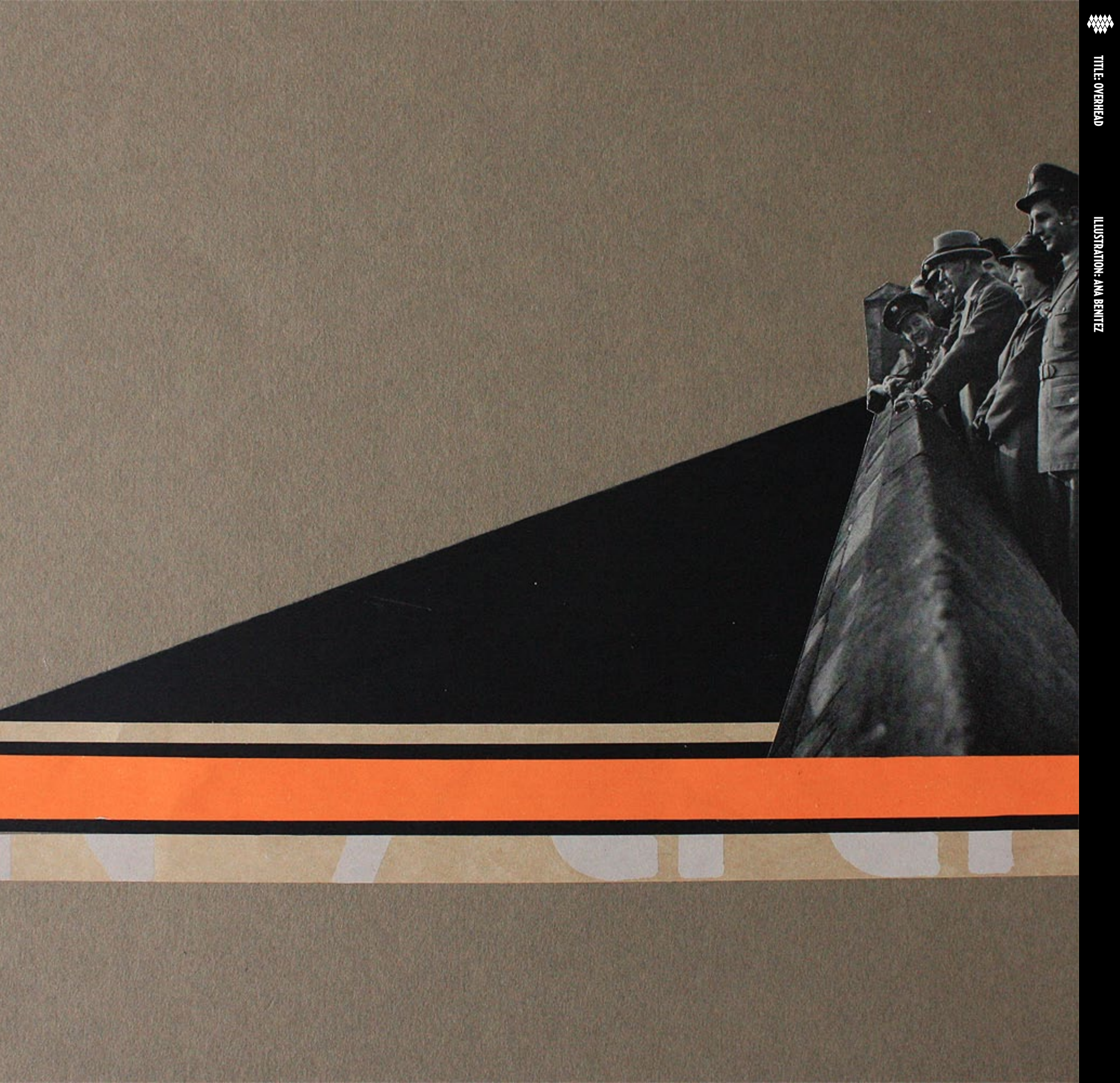
ILLUSTRATION: MIKEL JASO





TITLE: OVERHEAD

ILLUSTRATION: ANA BENITEZ





TITLE: RISE

ILLUSTRATION: EDU FUENTES



THE RESOLUTE

URGENCY OF NOW





TITLE: DON'T TOUCH MY HEART

DESIGN: ALBER CARNERO

AUTHORITY

Authority is the power to enforce laws, exact obedience, command, determine or judge.

Authority has been a subject of research in a variety of empirical settings

Types of authority

Positional authority



Expert authority



Referent authority



Coercive authority



Reward authority



family (parental authority)



small groups

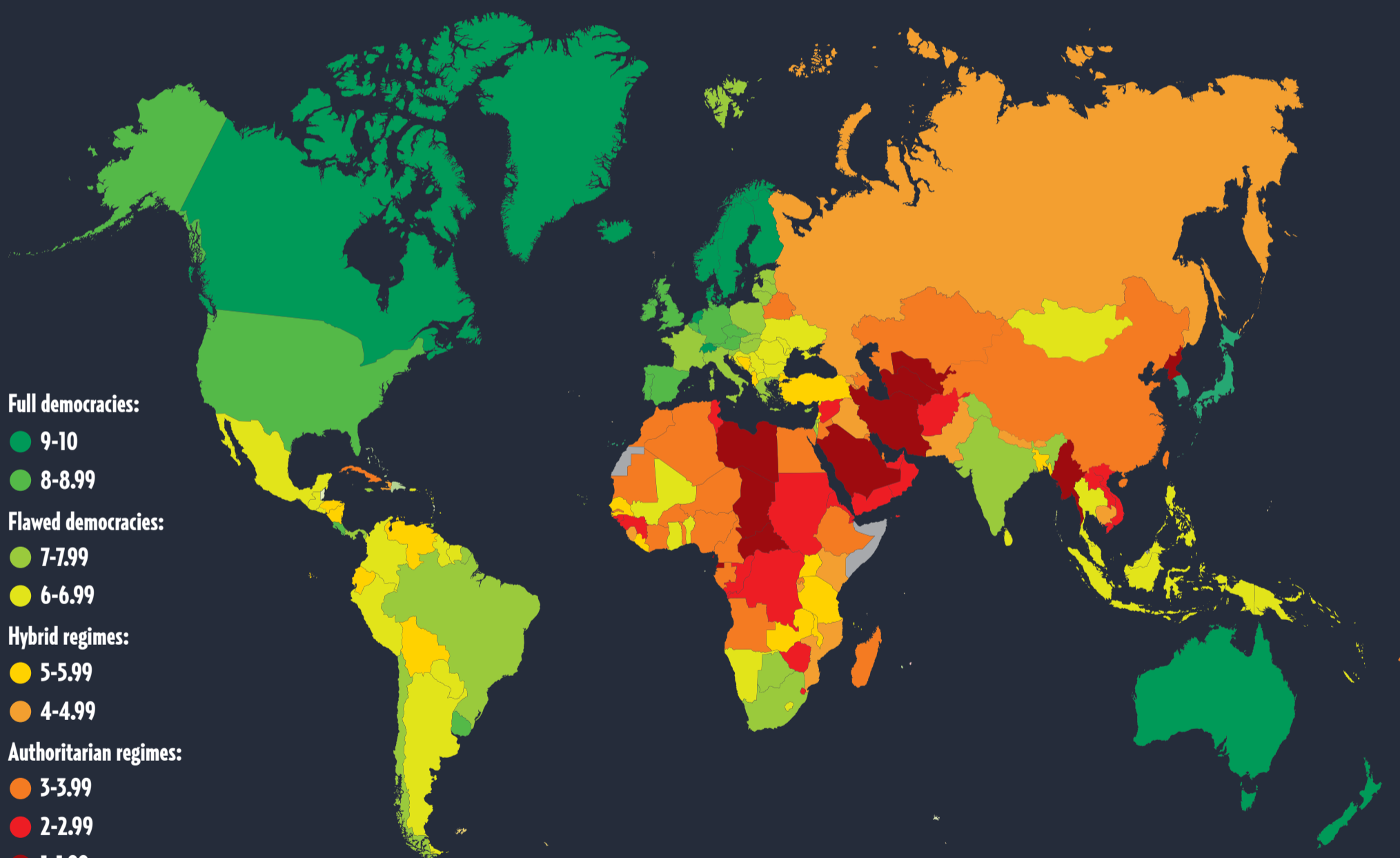


Intermediate organizations



political authority

Authority map



Full democracies:

- 9-10
- 8-8.99

Flawed democracies:

- 7-7.99
- 6-6.99

Hybrid regimes:

- 5-5.99
- 4-4.99

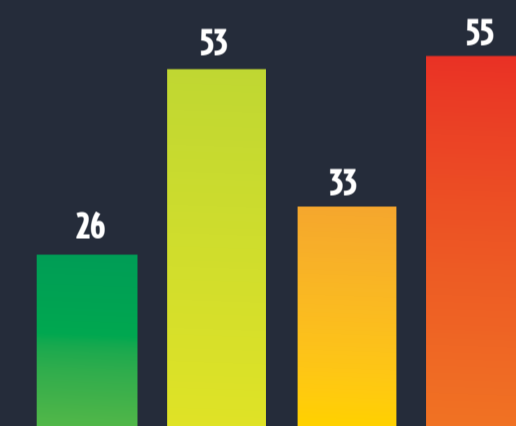
Authoritarian regimes:

- 3-3.99
- 2-2.99
- 1-1.99

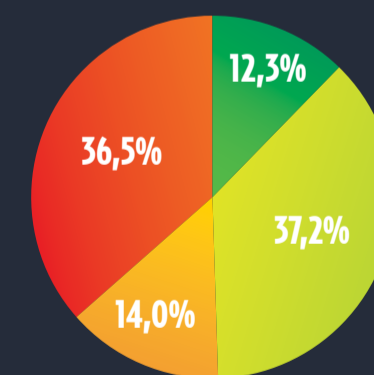
Most important questions

- Whether national elections are free and fair
- The security of voters
- The influence of foreign powers on government
- The capability of the civil servants to implement policies

Number of countries



% of world population



Obediency studies

The Milgram experiment showed just how far people would go, when ordered to hurt somebody else by an authority figure and how obedient people would be when a doctor told them to do something that was obviously horrific and possibly fatal.



The Stanford Prison Experiment (1971). Young men were divided into the roles of Prisoner and Guard and put in a prison-like environment. The brutality of the Guards and the suffering of the Prisoners was so intense that it had to be terminated after only six days.



The Hofling hospital experiment involved nurses being told to administer a dangerous dose of a drug to a patient. They knew exactly how toxic the dose would be, yet 21 of the 22 would still have performed the injection.



